



WELCOME TO "A WALK WITH THE 35TH"



[Back to History Index](#) | [35th Infantry Regiment ASSN Home](#) | [Contact](#)

Joseph John Ransdell Collection provided by grandson Mathew Ransdell. This collection shows many photos from Camp Otsu where the 35th was stationed in January of 1946 during the occupation of Japan. Not fully recognized is the location of the harbor photos. The 35th traveled from Lingayan Gulf, Philippines late Sept. 1945 to Nagoya, Japan; arriving 25 October. The Regiment moved from Nagoya to Camp Otsu in Jan. of 1946. If anyone recognizes a landmark, that information would be appreciated.



"Joseph John Ransdell"



Company B, 35th Infantry



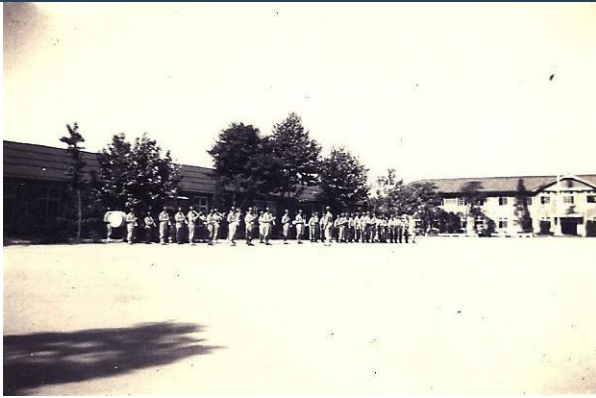
"2A"



"Albert"



"Albert"



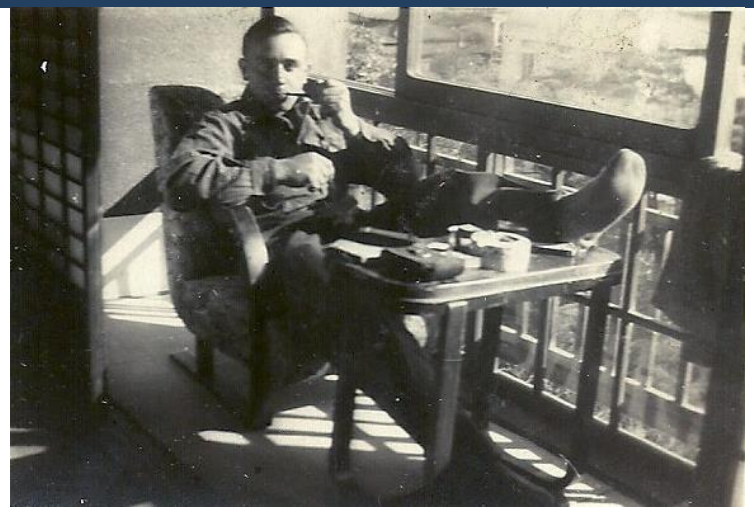
No Inscription but appears to be Camp Otsu



Camp Otsu?



"115"

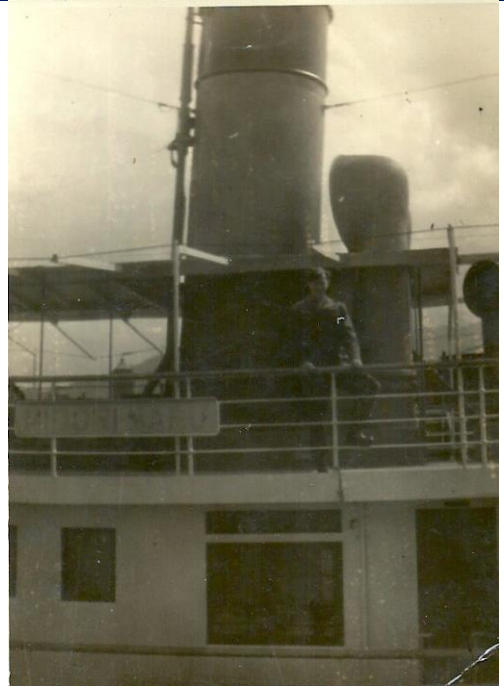


"115"





"Lithlifield"



"Nelson"



"Moore and Humphrey"



"Land Convoy"



"Land Convoy"



"Halsen, Pedro, Shirts"





"Joseph Ransdell and Gilihan"



"Joseph Ransdell and Ken"

